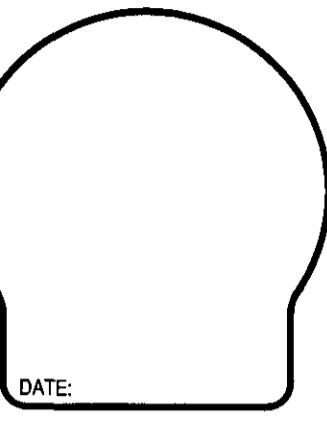


ENGINEERING

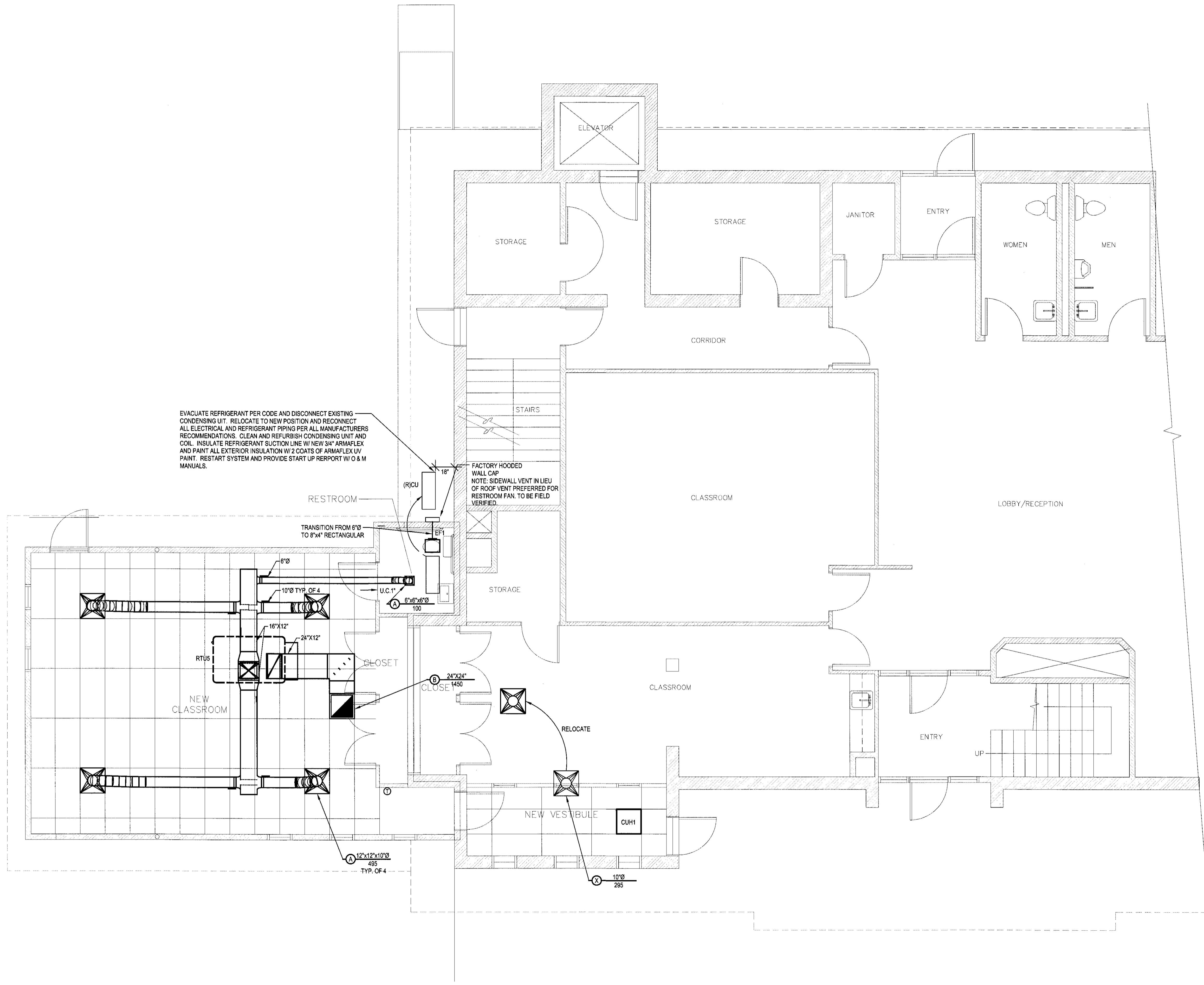
5737 W 6TH AVE.
LAKEWOOD, CO 80214
PHONE (303) 421-3208
FAX (303) 421-3209



ATTENTION: THESE MATERIALS ARE OWNED AND COPYRIGHTED BY DENIS MILLER CONSULTING ENGINEERS, INC. (DMCE) AND CONTAIN TECHNICAL DESIGN AND CONFIDENTIAL INFORMATION WHICH ARE TRADE SECRETS AS DEFINED BY STATE LAW. ACCESS TO THESE MATERIALS IS GIVEN ONLY TO APPROVED CONTRACTORS AND MATERIAL MEN AND ONLY FOR USE IN THE BIDDING AND CONSTRUCTION OF THE PROJECT IDENTIFIED BY THESE MATERIALS. ANY USE OF THIS INFORMATION FOR PURPOSES BEYOND THOSE EXPRESSLY PERMITTED BY DMCE IS A VIOLATION OF STATE AND FEDERAL LAW AND MAY SUBJECT THE USER TO CIVIL AND CRIMINAL PENALTIES.

DILLON CAMPUS ADDITION
COLORADO MOUNTAIN COLLEGE
333 FIEDLER AVE, DILLON, COLORADO
COLORADO MOUNTAIN COLLEGE
831 GRAND AVE, GLENWOOD SPRINGS, CO
970.947.8406

These documents are prepared for exclusive use by



EVACUATE REFRIGERANT PER CODE AND DISCONNECT EXISTING CONDENSING UNIT. RELOCATE TO NEW POSITION AND RECONNECT ALL ELECTRICAL AND REFRIGERANT PIPING PER ALL MANUFACTURERS RECOMMENDATIONS. CLEAN AND REFURBISH CONDENSING UNIT AND COIL. INSULATE REFRIGERANT SUCTION LINE W/ NEW 3/4" ARMAFLEX AND PAINT ALL EXTERIOR INSULATION W/ 2 COATS OF ARMAFLEX UV PAINT. RESTART SYSTEM AND PROVIDE START UP REREPORT W/ O & M MANUALS.

1 MECHANICAL FLOOR PLAN
SCALE: 1/4" = 1'-0"

NO.	DATE	DESCRIPTION
	10/09/09	ISSUED FOR CONSTRUCTION

DRAWN BY: JDW
CHECKED BY: DJM
ISSUE DATE: 9/30/09

SHEET NO.

M2.0

JOB # 905