

- GENERAL NOTES:**
1. DIMENSIONS ARE TO CENTER OF DEVICE WITH TRIM. A.U.O.N.
 2. ALL MOUNTING HEIGHTS SHALL CONFORM TO THE LATEST EDITION OF THE AMERICANS WITH DISABILITIES ACT, (ADA).

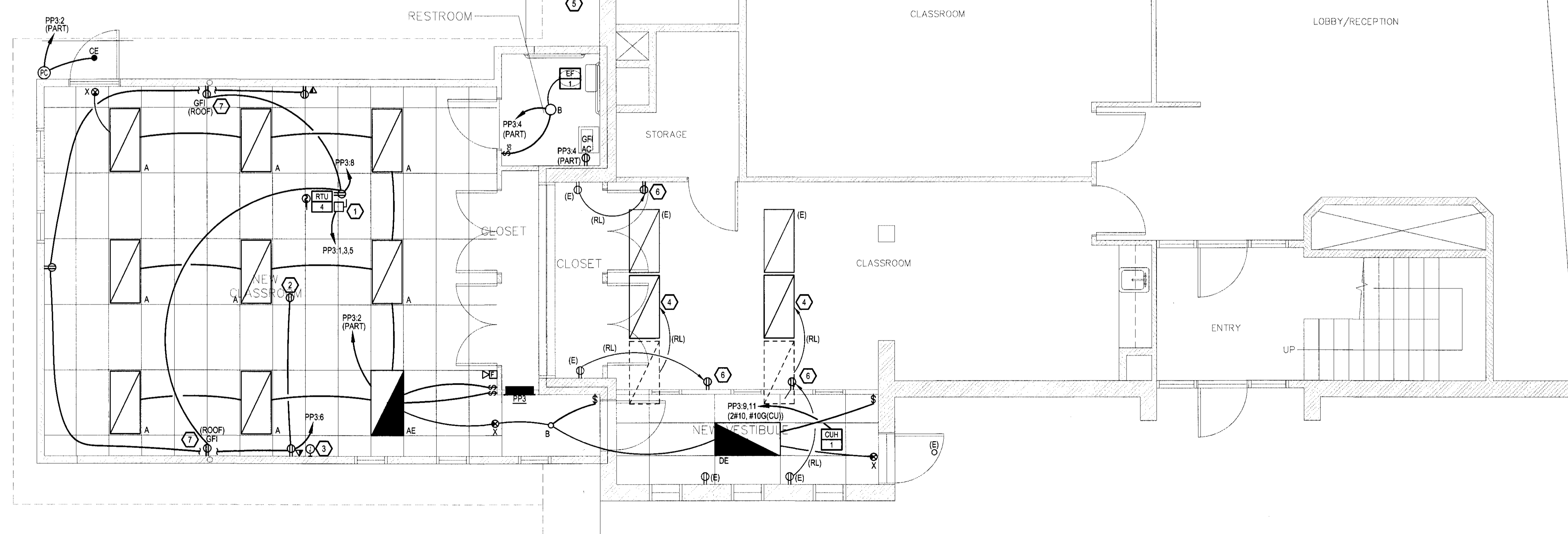
2 DEVICE MOUNTING HEIGHT DETAIL
NO SCALE

GENERAL NOTES:

1. FOR TELE/DATA OUTLETS PROVIDE 4x4 BOX, 2x4 MUDRING, 3/4" CONDUIT TO ACCESSIBLE CEILING, AND PULLSTRING. CABLING AND FACEPLATES BY OTHERS.
2. PROVIDE NEW FIRE ALARM DEVICES AS INDICATED. TIE DEVICES INTO EXISTING FIRE ALARM SYSTEM. PROVIDE BUILDING DEPT./FIRE DEPT. FIRE ALARM SUBMITTALS AS NECESSARY FOR WORK.

WORK NOTES:

1. PROVIDE 30A/3P, NON-FUSED, NEMA 3R DISCONNECT, AND 3#10, #10G(CU) CIRCUIT.
2. PROVIDE RECEPTACLE FOR CEILING MOUNTED PROJECTOR. COORDINATE EXACT LOCATION WITH SCREEN LOCATION.
3. FOR VIDEO SYSTEM, PROVIDE 4x4 DEVICE BOX WITH (2) 3/4" CONDUITS TO ACCESSIBLE CEILING AND PULL STRINGS. CABLING AND FACE PLATE BY OTHERS.
4. RE-LOCATE EXISTING 2x4'S AND RE-CIRCUIT.
5. RE-LOCATE EXISTING WALL MOUNTED LIGHT FIXTURE AND COMPRESSOR ELECTRICAL LOCATED IN THIS AREA FOR CONSTRUCTION OF ADDITION.
6. REMOVE RECEPTACLE AT EXISTING LOCATION. PROVIDE COVER PLATE AT EXISTING LOCATION. PROVIDE NEW RECEPTACLE AT LOCATION INDICATED AND REUSE EXISTING CIRCUIT AT NEW RECEPTACLE LOCATION.
7. MOUNT REVEPTACLE ON PARAPET NEAR ROOF DRAIN FOR FUTURE HEAT TRACE.



1 ELECTRICAL POWER & LIGHTING PLAN
SCALE: 1/4" = 1'-0"

LUMINAIRE SCHEDULE											
TYPE	LOCATION	DESCRIPTION	MANUFACTURER	CATALOG #	VOLTS	LAMPING	BALLAST	MOUNTING	WATTS	VA	KEY NOTES
A	INTERIOR	2x4 RECESSED PARABOLIC FLUORESCENT FIXTURE, (18) 3" DEEP CELLS, LOW IRIDESCENT DIFFUSE SILVER, TANDEM FIXTURE PANS, DUAL LEVEL SWITCHING	LITHONIA	2PM3-G-32-18-LD-120-GE10IS-LST	120V	(3) 32W/T8	GE10IS	RECESSED	95	103	
AE	INTERIOR	SAME AS ABOVE WITH EMERGENCY BATTERY PAK (NOMINAL 1400 LUMENS)	LITHONIA	2PM3-G-32-18-LD-120-GE10IS-LST-EL14	120V	(3) 32W/T8	GE10IS, EM	RECESSED	95	103	
B	INTERIOR	8-INCH RECESSED VERTICAL LAMP DOWNLIGHT, CLEAR SPECULAR OPEN REFLECTOR	LITHONIA	LP8F-42TRT-120-607AZ	120V	(1) 42W TRT	GE8	RECESSED	45	49	
CE	EXTERIOR	8-INCH RECESSED VERTICAL LAMP DOWNLIGHT, WHITE SPAY, CLEAR LENS, EMERGENCY BATTERY PAK	LITHONIA	LP8FN-42TRT-4LRF1-120-EL	120V	(1) 42W TRT	GE8	RECESSED	45	49	
DE	INTERIOR	2x4 RECESSED PARABOLIC FLUORESCENT FIXTURE, (18) 3" DEEP CELLS, LOW IRIDESCENT DIFFUSE SILVER, EMERGENCY BATTERY PAK (NOMINAL 1400 LUMENS)	LITHONIA	2PM3-G-32-18-LD-120-GE10IS-EL14	120V	(3) 32W/T8	GE10IS	RECESSED	95	103	
X	INTERIOR	LED EXT SIGN, WHITE HOUSING, GREEN LETTERING, NICKEL-CADMIUM BATTERY	LITHONIA	LOM-P-WV_G-120-EL	120	LED		SURFACE	10	10	

GENERAL NOTES:

1. PROVIDE ELECTRONIC BALLASTS FOR ALL FLUORESCENT FIXTURES.
2. FLUORESCENT LAMPS SHALL BE 3500 K RATED.

KEY NOTES:

1. REFERENCE ARCHITECTURAL PLAN FOR MOUNTING HEIGHTS
2. PROVIDE REMOTE EMERGENCY BALLAST MOUNTED IN ACCESSIBLE LOCATION.

BALLAST LEGEND

GE8 ELECTRONIC BALLAST, < 20% THD
 GE10IS ELECTRONIC BALLAST, < 10% THD, INSTANT START
 GE10IS ELECTRONIC BALLAST, < 10% THD, RAPID START
 GE10PS ELECTRONIC BALLAST, < 10% THD, PROGRAM START
 EM EMERGENCY BATTERY BALLAST
 LOVD DIMMING BALLAST, 4-WIRE, 24VDC TYPE
 LVD DIMMING BALLAST, LINE VOLTAGE TYPE
 CW COLD WEATHER BALLAST

DME ENGINEERING
5737 W 6TH AVE.
LAKEWOOD, CO 80214
PHONE (303) 421-3208
FAX (303) 421-3209

ATT: THESE MATERIALS ARE OWNED AND COPYRIGHTED BY DENIS MILLER CONSULTING ENGINEERS, INC. (DMCE) AND CONTAIN TECHNICAL DESIGN AND CONFIDENTIAL INFORMATION WHICH ARE TRADE SECRET AS PERMITTED BY STATE LAW. ACCESS TO THESE MATERIALS IS GIVEN ONLY TO APPROVED CONTRACTORS AND MATERIAL MEN AND ONLY FOR USE IN THE BIDDING AND CONSTRUCTION OF THE PROJECT SPECIFIED BY THESE MATERIALS. ANY USE OF THIS INFORMATION FOR PURPOSE BEYOND THOSE EXPRESSLY PERMITTED BY ONCE IS A VIOLATION OF STATE AND FEDERAL LAW AND WILL SUBJECT THE USER TO CIVIL AND CRIMINAL PENALTIES.

DILLON CAMPUS ADDITION
COLORADO MOUNTAIN COLLEGE
 333 FIEDLER AVE, DILLON, COLORADO
 COLORADO MOUNTAIN COLLEGE
 831 GRAND AVE, GLENWOOD SPRINGS, CO
 970.947.8406

These documents are prepared for exclusive use by

NO.	DATE	DESCRIPTION
	10/28/09	ISSUED FOR CONSTRUCTION

DRAWN BY: ELL
 CHECKED BY: AWE
 ISSUE DATE: 9/30/09

SHEET NO.
E2.0